

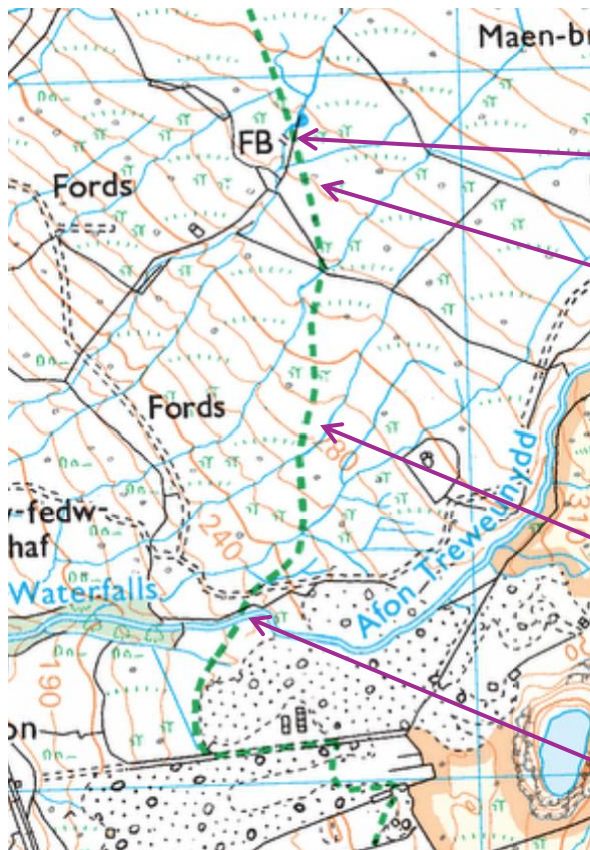
Tour de Wyddfa Notes on course

Remember: this is a national park not a play park, its also people's homes and livelihood.

Enjoy it, respect it, care for it.

The gpx is a guide to which path you must follow – **do not** use it on the day, **do not** follow it blindly.

<https://drive.google.com/file/d/11vdl2kPQ4ATZ7CFBthVy9DQM2lqgxhHO/view?usp=drivesdk>

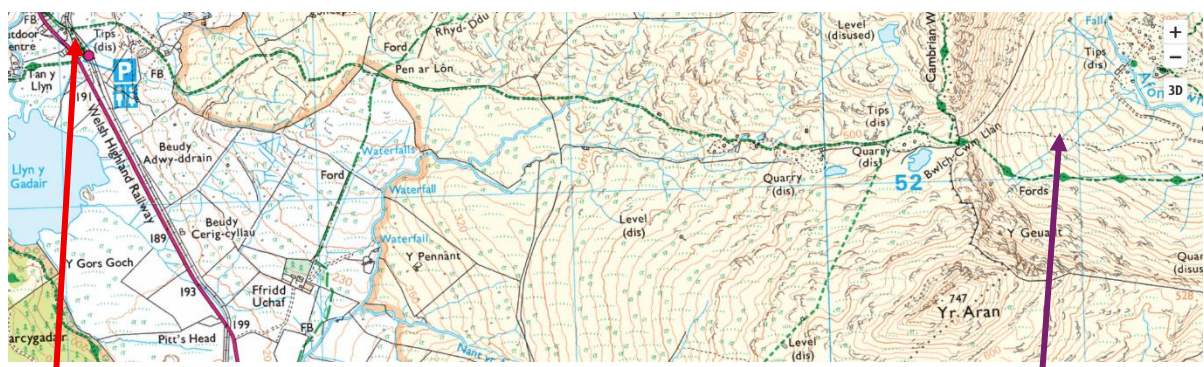


Foot bridge is old, be careful – you can jump the stream.

Way marker to turn off track 5-10m from bridge is on the ground. Way markers from this point are sparse

If you lose path set compass for bottom of the quarry

SHUT THE GATE on the metal bridge. BEWARE ICE on metal bridge



CHECK POINT Rhydd Du 571 527

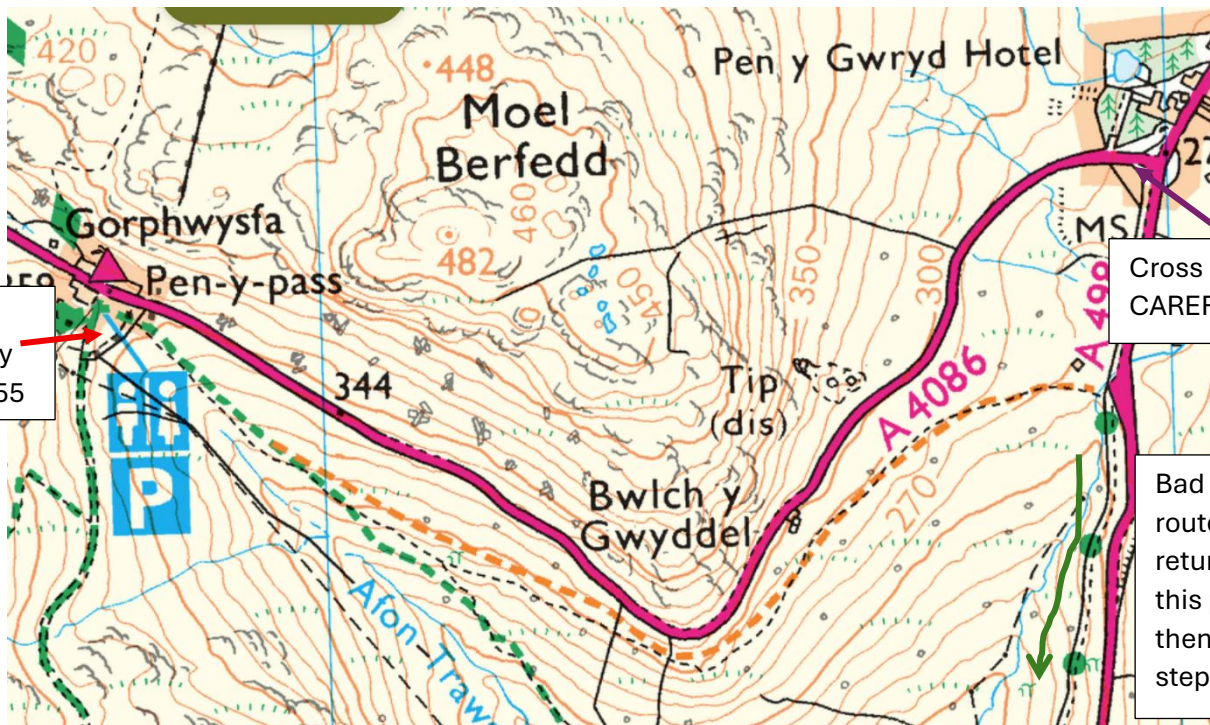
This path is now the made path, please use this.



Route

CHECK POINT
Nant Gwynant 629

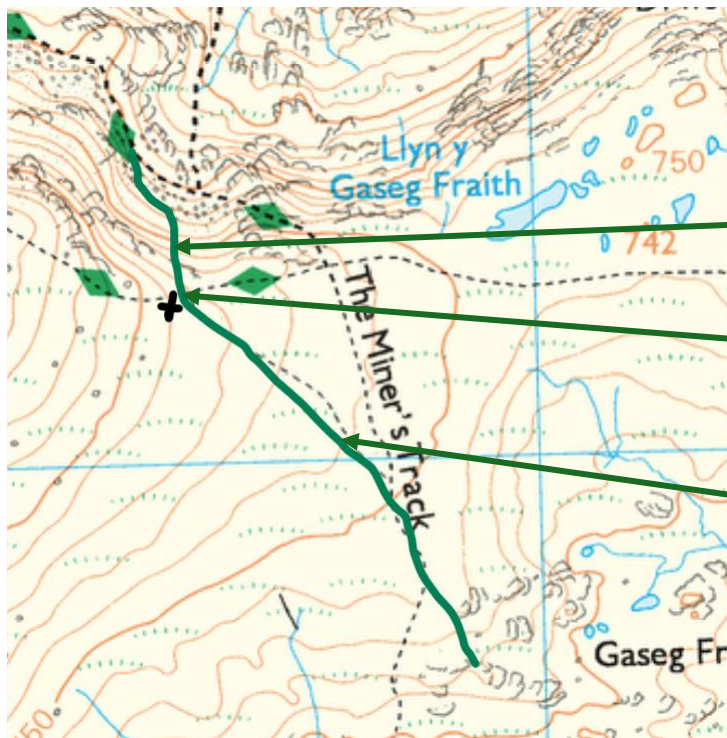
Follow path
through wood



CHECK
POINT Pen y
Pass 648 555

Cross Road
CAREFULLY

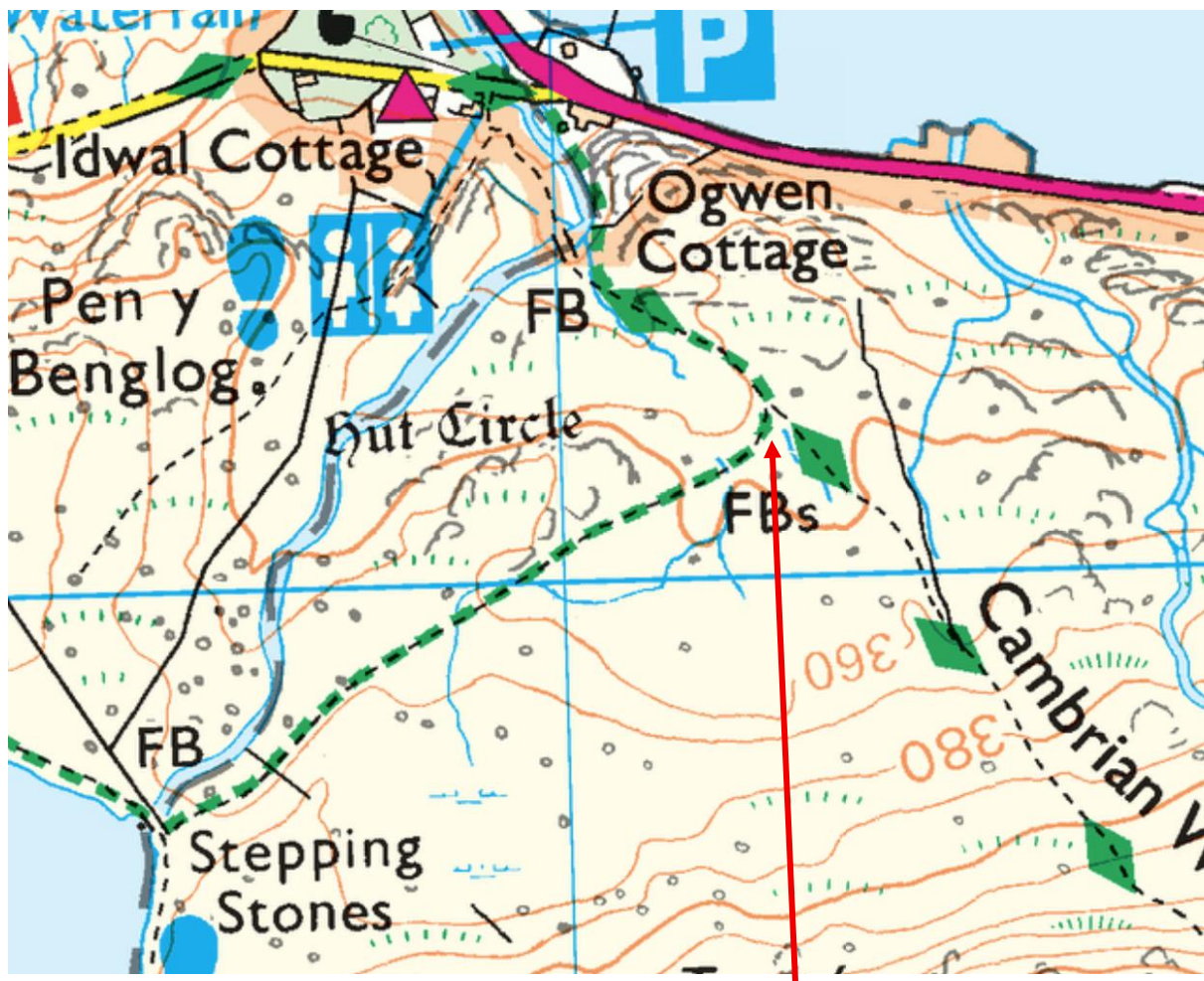
Bad weather
route will
return down
this path and
then retrace
steps



New made path, follow this rather than where the public footpath is marked

cairn

If its misty GET YOUR COMPASS OUT aprox 338.



CHECKPOINT Above Idwal Cottage 652 601

